

Posaune

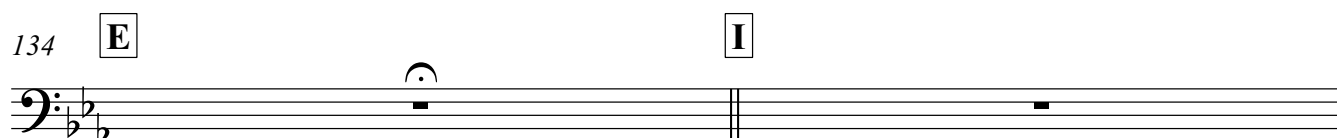
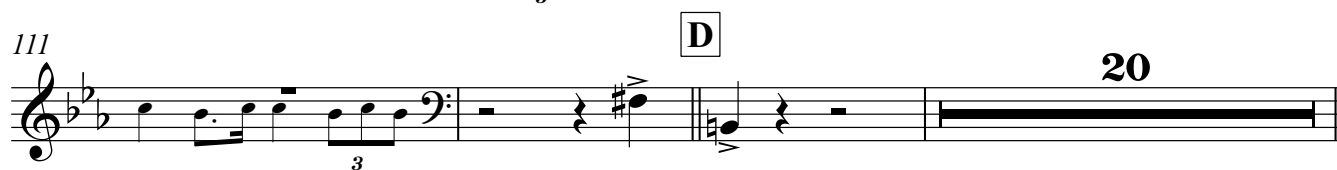
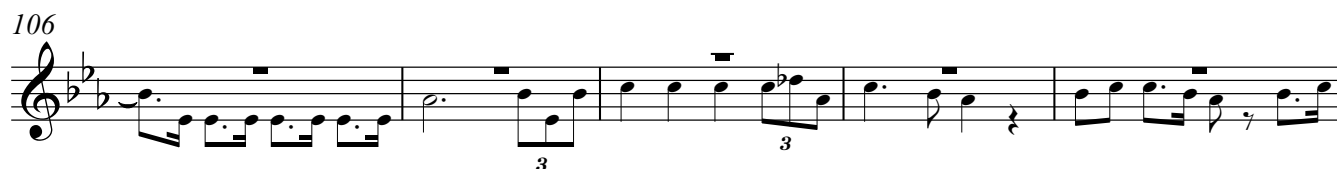
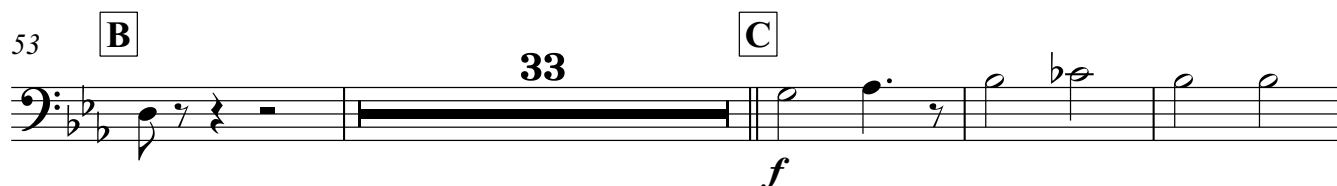
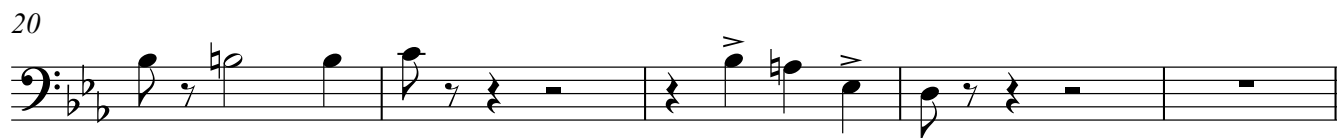
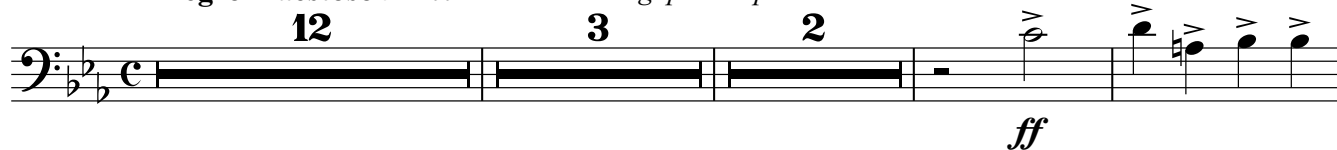
Aida II. Akt  
Triumphmarsch und Chor  
"Gloria all'Egitto"

**SYMPHONIC**  
**MOB** DSO

G. Verdi

Vereinfachte Stimmen J. Riihimäki

**Allegro maestoso** ♩ = 100 *Cresc. e string. poco a poco*



156

*f*

**J** Piú animato (♩ = 132g. *poco a poco*)

[illegible]

**Ritenuto come Prima**

stentato

**K** *tutta forza*

[illegible]

Musical notation for Example 6-10, showing a bass clef staff with notes G<sub>2</sub>, F<sub>2</sub>, E<sub>2</sub>, D<sub>2</sub>, C<sub>2</sub>, B<sub>1</sub>, A<sub>1</sub>, G<sub>1</sub>, F<sub>1</sub>, E<sub>1</sub>, D<sub>1</sub>, C<sub>1</sub>.

Musical notation for the bass line of 'The Rose Tree'. The key signature has two flats (B-flat and E-flat), and the time signature is 3/4. The melody consists of the following notes: G2 (half note), rest (quarter note), G2 (half note), G2 (half note), G2 (half note), rest (quarter note), G2 (half note), F2 (half note), E2 (half note), D2 (half note).

**L** Piú animato (♩ = 132)

Musical notation for the bass line of 'The Rose Tree'. The key signature is B-flat major (two flats). The melody consists of eighth and quarter notes with various accidentals (flats and naturals) and rests.

[illegible]